

Drug Interactions Between Direct-Acting anti-HCV Antivirals Sofosbuvir and Ledipasvir and HIV Antiretrovirals

Reported by Jules Levin

15th International Workshop on Clinical Pharmacology of HIV & Hepatitis Therapy, May 19–21, 2014, Washington, DC

Polina German, Philip S Pang, Steve West, Lingling Han, Karim Sajwani and Anita Mathias
Gilead Sciences, Foster City, CA

Conclusions and Next Steps

- ◆ LDV/SOF and RAL, ATR or CPA (or components) may be co-administered without dose adjustment
- ◆ Study treatments were well tolerated
- ◆ ION-4: Phase 3 HIV/HCV co-infection trial of LDV/SOF
 - Allowed HIV ARV regimens: RAL + FTC/TDF; ATR or CPA (or components)
- ◆ Planned/ongoing Phase 1 DDI evaluation of LDV/SOF with ARVs
 - Boosted PI regimens
 - EVG/COBI/FTC/TDF (Stribild®)
 - EVG/COBI/FTC/TAF
 - Dolutegravir

Drug Interactions Between Direct-Acting anti-HCV Antivirals Sofosbuvir and Ledipasvir and HIV Antiretrovirals

Polina German, Philip S Pang, Steve West, Lingling Han, Karim Sajwani
and Anita Mathias

Gilead Sciences, Foster City, CA

Sofosbuvir (SOF, Formerly GS-7977)

- ◆ HCV NS5B nucleotide analog prodrug with broad genotypic activity
- ◆ Activated by sequential metabolic pathways including
 - Low affinity and high capacity hydrolases (CES1, CatA, HINT1)
 - Nucleotide phosphorylation (UMP-CMP kinase, NDP kinase)
- ◆ SOF enters hepatocytes and is converted to active SOF-TP
- ◆ SOF undergoes extrahepatic metabolism to form GS-331007 (predominant inactive circulating metabolite), principally eliminated in urine
- ◆ Safe and well tolerated
 - Once daily dosing
 - Favorable safety profile in preclinical/clinical studies

Ledipasvir (LDV, Formerly GS-5885)

- ◆ HCV NS5A inhibitor
- ◆ Picomolar potency against GT1a and 1b
- ◆ LDV is minimally metabolized and primarily eliminated in the feces
- ◆ Safe and well tolerated
 - Once daily dosing
 - Favorable safety profile in preclinical/clinical studies

LDV/SOF (90/400 mg) fixed-dose combination tablet is under US-EU regulatory review for the treatment of HCV GT 1 infection

Pre/Clinical Pharmacology

- ◆ LDV and SOF (not GS-331007) are substrates for P-gp and BCRP
- ◆ LDV but not SOF is an inhibitor of intestinal P-gp and BCRP
- ◆ LDV is an inhibitor of hepatic OATP1B1, 1B3 and BSEP at concentrations exceeding those achieved clinically
- ◆ LDV and SOF are not substrates for hepatic OCT1, OATP1B1 or OATP
- ◆ GS-331007 is not a substrate for renal transporters OAT1, OAT3, or OC
- ◆ LDV and SOF are not substrates for UGT1A1
- ◆ LDV is subject to slow oxidative metabolism
 - No turnover by CYP450 isozymes (in vitro phenotyping studies)
- ◆ SOF is not a substrate for CYP450

Limited potential for clinically significant drug interactions

HIV Antiretrovirals

- ◆ Integrase strand transfer inhibitor
 - Raltegravir (RAL, Isentress®)
- ◆ NNRTI-based regimens
 - Efavirenz (EFV)/emtricitabine (FTC)/tenofovir DF (TDF) (ATR, Atripla®)
 - Emtricitabine/rilpivirine (RPV)/tenofovir DF (CPA, Complera®)

Objectives

Primary

- ◆ To evaluate the drug-drug interaction between LDV and RAL
 - SOF and RAL may be administered without dose adjustment¹
- ◆ To evaluate the drug-drug interaction between LDV/SOF and ATR or CPA

Secondary

- ◆ To evaluate the safety and tolerability of co-administration of LDV with RAL and LDV/SOF with ATR or CPA

1. Kirby B, et al. AASLD 2012.

Methods

- Two Phase 1, open-label, randomized, multiple-dose, cross-over DDIs in healthy male and female subjects

Study 1

Fed (N=30)
LDV (90 mg QD) + RAL (400 mg BID)

Days 1-10	Days 11-20	Days 21-30
LDV	RAL	LDV + RAL
LDV	LDV + RAL	RAL
RAL	LDV	LDV + RAL
RAL	LDV + RAL	LDV
LDV + RAL	LDV	RAL
LDV + RAL	RAL	LDV

Study 2

Cohort 1: Fasted (n=32)
LDV/SOF (90/400 mg QD) +
ATR (600/200/300 mg QD)

Days 1-14	Days 16-28
LDV/SOF	LDV/SOF + ATR
ATR	LDV/SOF + ATR

Cohort 2: Fed (n=32)
LDV/SOF (90/400 mg QD) +
CPA (200/25/300 mg QD)

Days 1-10	Days 11-20
LDV/SOF	LDV/SOF + CPA
CPA	LDV/SOF + CPA

Methods

- ◆ PK sampling was collected over 24 hours for LDV, SOF, GS-331007, EFV, RPV, FTC and TFV and over 12 hours for RAL
- ◆ Plasma concentrations were determined using validated LC/MS/MS assays
- ◆ PK parameters were estimated using noncompartmental methods (WinNonlin® 6.3, Pharsight Corp., USA)
- ◆ Geometric least-squares mean ratios and 90% confidence intervals (Test: Reference) were estimated using ANOVA for AUC_{τ} , C_{\max} and C_{τ} and compared against lack of PK alteration boundaries of 70-143%
- ◆ Adverse event (AE) monitoring, clinical laboratory, physical examination and ECG evaluations were performed throughout study

Subject Enrollment and Demographics

Subjects	Study 1	Study 2	
		Cohort 1	Cohort 2
Enrolled/completed*, n	30/28	32/29	32/29
Mean age, y (range)	32 (22, 45)	35 (20, 45)	35 (23, 45)
Mean weight, kg (range)	80 (56, 101)	77 (57, 102)	75 (50, 99)
Sex (male/female), n	23/7	23/9	19/13
Race, n (%)			
White	23 (77)	26 (81)	20 (63)
Non-white	7 (23)	6 (19)	12 (38)
Ethnicity n (%)			
Hispanic/Latino	25 (83)	25 (78)	24 (75)
Non-Hispanic/Latino	5 (17)	7 (22)	8 (25)

*Study 1: 2 subjects discontinued (DCed) due to adverse events (AE);
 Study 2 (Cohort 1): 2 subjects withdrew consent; 1 DCed due to AE;
 Study 2 (Cohort 2): 1 subject withdrew consent; 2 DCed due to AE.

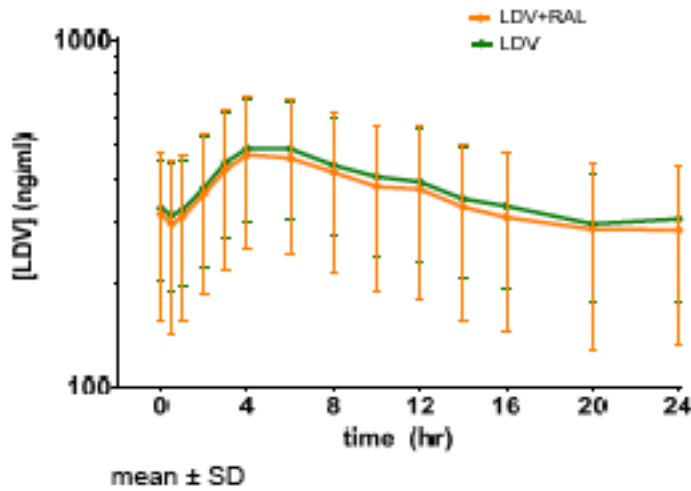
Safety

- ◆ No Grade 3 (severe) or Grade 4 (life-threatening) AEs or serious AEs
- ◆ Majority of AEs were Grade 1 (mild)

AE by System Organ Class, n of subjects (%)	Study 1 n=30	Study 2	
		Cohort 1 n=32	Cohort 2 n=32
Treatment-Emergent AEs	10 (33)	21 (66)	11 (34)
AEs leading to discontinuation*	2 (7)	1 (3)	1 (3)
Study drug-related AEs	1 (3)	11 (34)	6 (19)
Cardiac disorders			1 (3)
Gastrointestinal disorders	1 (3)	8 (25)	6 (19)
General disorders			1 (3)
Musculoskeletal and connective tissue disorders			1 (3)
Nervous system disorders		2 (6)	
Psychiatric disorders		1 (3)	1 (3)
Reproductive systemic and breast disorders		1 (3)	
Skin and subcutaneous tissue disorders			1 (3)

*Study 1: Grade 2 abdominal pain; Grade 2 furuncle;
 Study 2 (Cohort 1): Grade 1 nausea;
 Study 2 (Cohort 2): Grade 2 atrial fibrillation.

Effect of RAL on LDV/SOF



LDV PK Parameters

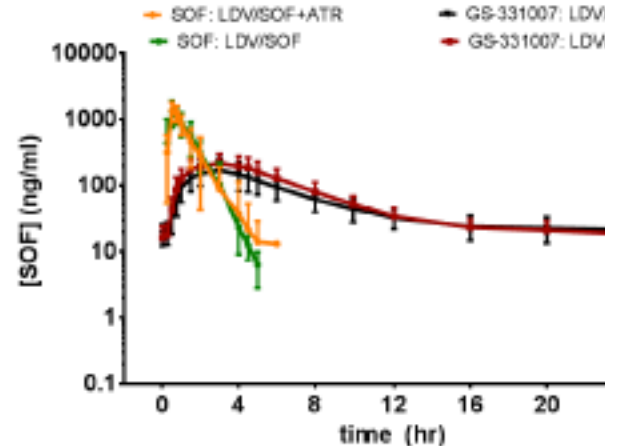
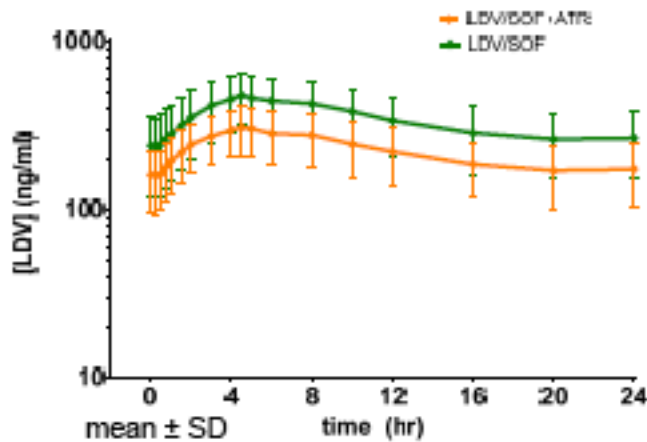
LDV PK Parameters	GMR% (90% CI) LDV + RAL vs LDV
AUC _{tau} (ng·h/mL)	91.5 (84.0, 99.0)
C _{max} (ng/mL)	92.2 (84.9, 100.0)
C _{tau} (ng/mL)	89.1 (81.3, 97.0)

Data presented to 3 significant figures; LDV + RAL: n=28; LDV: n=29.

- ◆ No effect of RAL on LDV PK
- ◆ Previous data demonstrated no DDI between SOF and RAL

1. Kirby B, et al. AASLD 2012.

Effect of ATR on LDV/SOF

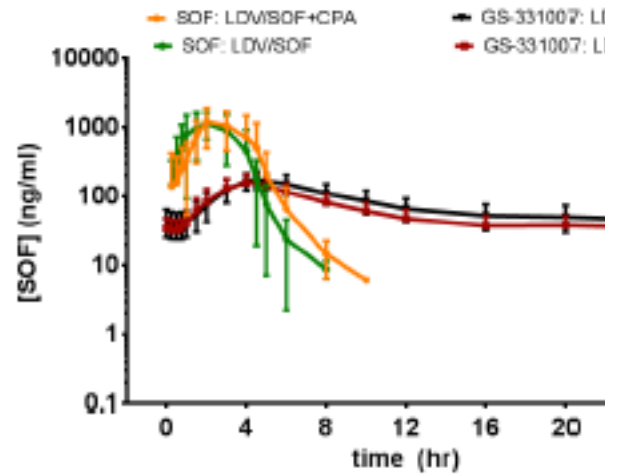
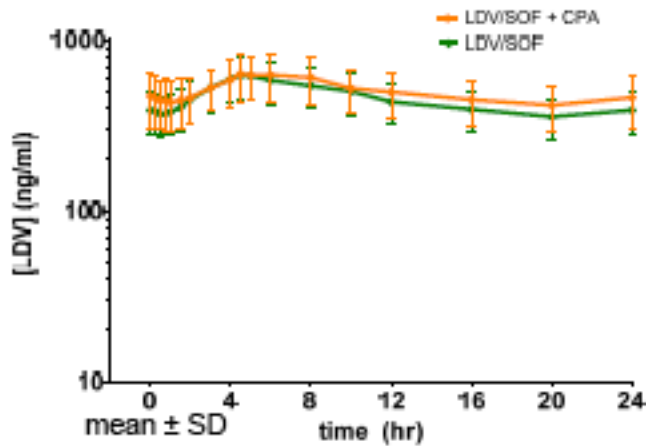


- ◆ ~ 30% reduction in LDV PK with ATR
 - Not clinically significant based on exposure-response evaluation
- ◆ No impact on SOF or GS-331007 PK

PK Parameters	GMR% (90% CI): LDV/SOF + ATR vs LDV/SOF		
	LDV	SOF	GS-331007
AUC _{tau} (ng·h/mL)	66.4 (58.7, 75.3)	94.3 (81.0, 110)	89.6 (82.8, 96)
C _{max} (ng/mL)	66.4 (58.9, 74.9)	103 (86.7, 123)	85.7 (76.2, 96)
C _{tau} (ng/mL)	66.1 (57.1, 76.5)		107 (102, 113)

Data presented to 3 significant figures; n=14.

Effect of CPA on LDV/SOF

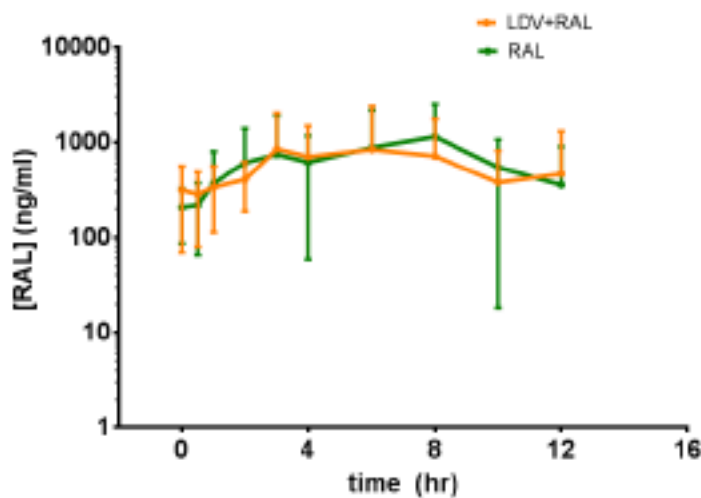


- ◆ No impact of CPA on LDV, SOF or GS-331007 PK

PK Parameters	GMR% (90% CI): LDV/SOF + CPA vs LDV/SOF		
	LDV	SOF	GS-331007
AUC _{tau} (ng·h/mL)	108 (102, 115)	110 (101, 121)	115 (111, 119)
C _{max} (ng/mL)	101 (94.6, 107)	105 (92.5, 120)	106 (101, 111)
C _{tau} (ng/mL)	116 (108, 125)		118 (113, 123)

Data presented to 3 significant figures; LDV/SOF+CPA : N=17; LDV/SOF: N=15.

Effect of LDV/SOF on RAL



mean \pm SD

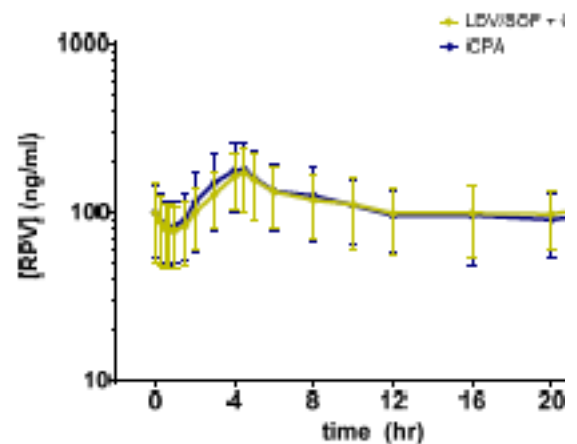
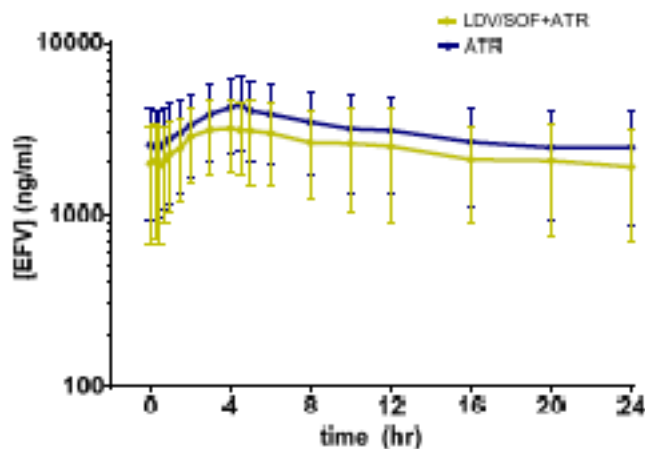
RAL PK Parameters	GMR%
AUC _{tau} (ng·h/mL)	84.5 (69)
C _{max} (ng/mL)	82.2 (66)
C _{tau} (ng/mL)	115 (90)

Data presented to 3 significant figures; LDV LDV: N=29.

- ◆ Approximately 15-18% change in RAL PK with LDV
 - Similar or higher decreases in RAL PK with TVR/r and EF
- ◆ Previous data demonstrated no DDI between SOF and

1. Kirby B, et al. AASLD 2012; 2. Hanley WD, et al. AAC 2009; 3. Iwamoto M, AAC 2008.

Effect of LDV/SOF on EFV (ATR) and RPV (CPA)



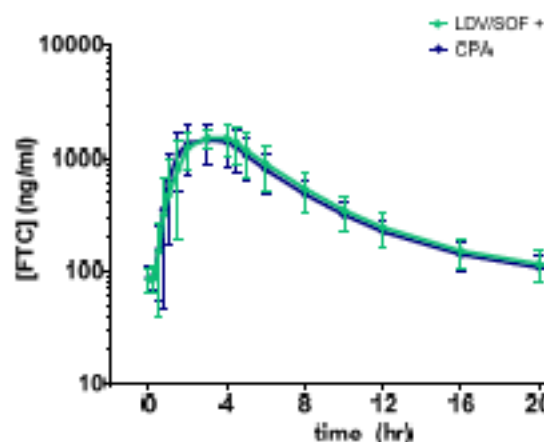
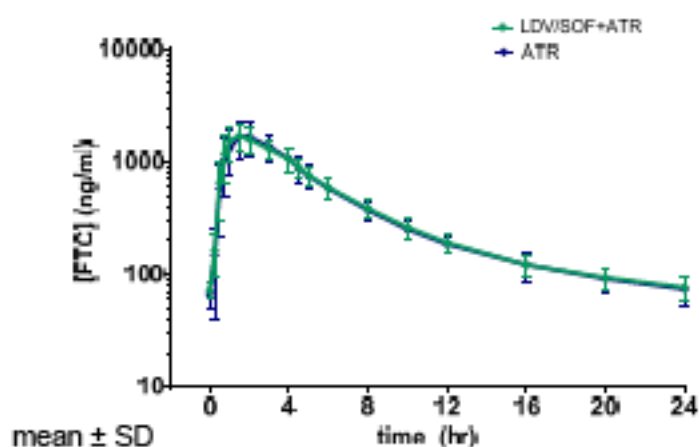
mean \pm SD

◆ No impact on EFV or RPV PK by LDV/SOF

PK Parameters	GMR% (90% CI): LDV/SOF + ARV vs ARV	
	EFV	RPV
AUC _{tau} (ng·h/mL)	89.7 (83.9, 95.9)	102 (93.6, 111)
C _{max} (ng/mL)	87.7 (78.6, 96.9)	97.0 (87.9, 107)
C _{tau} (ng/mL)	90.8 (83.1, 99.1)	112 (103, 121)

Data presented to 3 significant figures; LDV/SOF + ATR: n=15; ATR: n=17; LDV/SOF + CPA: n=14; CP

Effect of LDV/SOF on FTC (ATR or CPA)

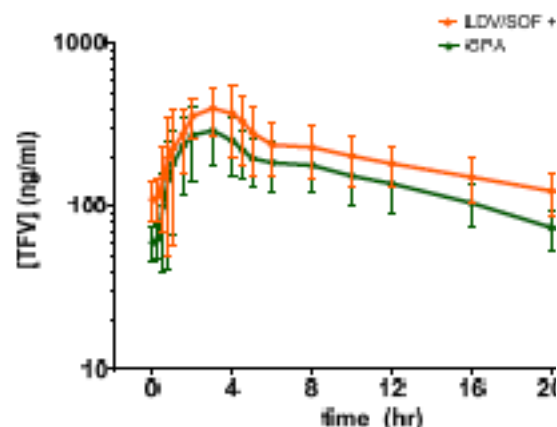
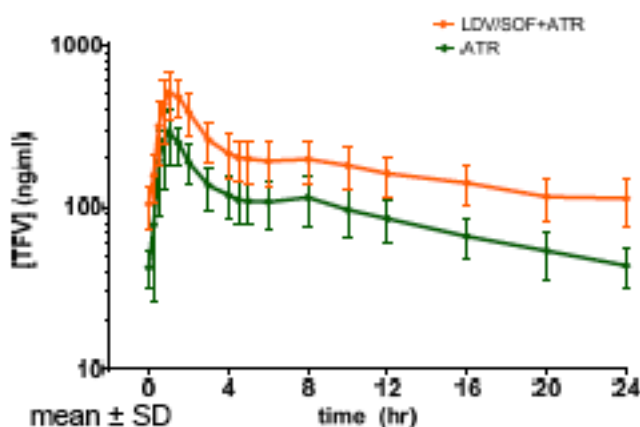


◆ No impact on FTC PK by LDV/SOF

FTC PK Parameter	GMR% (90% CI): LDV/SOF + ARV vs ARV	
	ATR	CPA
AUC _{tau} (ng·h/mL)	105 (98.1, 111)	104 (102, 108)
C _{max} (ng/mL)	108 (97.0, 121)	102 (97.9, 106)
C _{tau} (ng/mL)	103 (98.0, 111)	106 (97.1, 115)

Data presented to 3 significant figures; LDV/SOF + ATR: n=15; ATR: n=17; LDV/SOF + CPA: n=14; C

Effect of LDV/SOF on TFV (ATR or CPA)



TFV PK Parameter	Mean (%CV)		GMR% (90% CI): LDV/SOF + ATR	
	LDV/SOF + ATR	LDV/SOF + CPA	ATR	CPA
AUC ₀₋₂₄ (ng·h/mL)	4400 (27.1)	4780 (28.6)	198 (177, 223)	140 (127, 154)
C _{max} (ng/mL)	527 (29.9)	490 (24.1)	179 (156, 204)	132 (117, 147)
C _{12h} (ng/mL)	113 (33.0)	118 (26.4)	263 (237, 297)	191 (173, 209)

Data presented to 3 significant figures; LDV/SOF + ATR: n=15; ATR: n=17; LDV/SOF + CPA: n=14; CPA: n=14

- ◆ LDV/SOF increased TFV exposure
 - Similar **absolute** TFV exposures (within ATR or CPA) with LDV/SOF
 - TFV exposures in LDV/SOF + NNRTI-based regimens are similar to those in boosted HIV PIs
 - Lack of marked changes in TFV Cl_{renal} (data on file)